



Improved Math Mindsets - Engagement & Rigor Drive Results

District Profile



Blue Earth County, MN
City Type: Small City, Pre-K to 12

Total Students:	8,398
Classroom Teachers (FTE):	560
Student/Teacher Ratio:	15:1
Spend Per Student:	\$15,869



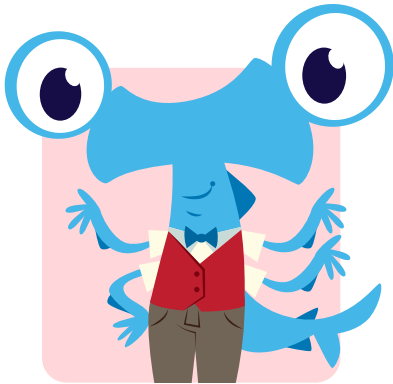
Overview

Evaluate the impact of two years of Beast Academy (BA) programming on student achievement in mathematics in the Mankato Area Public Schools district.

'19-'20 School Year	Grades 3,4,5
'20-'21 School Year	Grades 4,5,6 ¹
Total:	1,000 Students

Key Findings

- 1. All cohorts of students experienced math growth
- 2. BA usage directly impacts growth in mathematics²
- 3. BA usage has a positive impact on student attitudes toward math³



Finding 1

All Cohorts of Students Experienced Math Growth



Cluster Students

Gifted and talented students scored **10.1** points higher on average

Rising Scholar Students

High-ability students from historically marginalized communities scored **11.2** points higher on average

On-Track Students

Students who were neither Cluster nor Rising Scholar scored **6.7** points higher on average

1. same students
2. through analysis of NWEA MAPS data and administrative data
3. via a student survey

Finding 2

Beast Academy Usage Correlates with Significant Math Score Gains

Students using Beast Academy more frequently saw substantial increases in math scores, with high users outperforming peers by nearly 9 points.



User Profile	Usage Level (attempted lessons)	Predicted Math Score
Low	13	222.08
Below Average	45	222.78
Average	120	224.40
Above Average	257	227.36
High	442	231.35

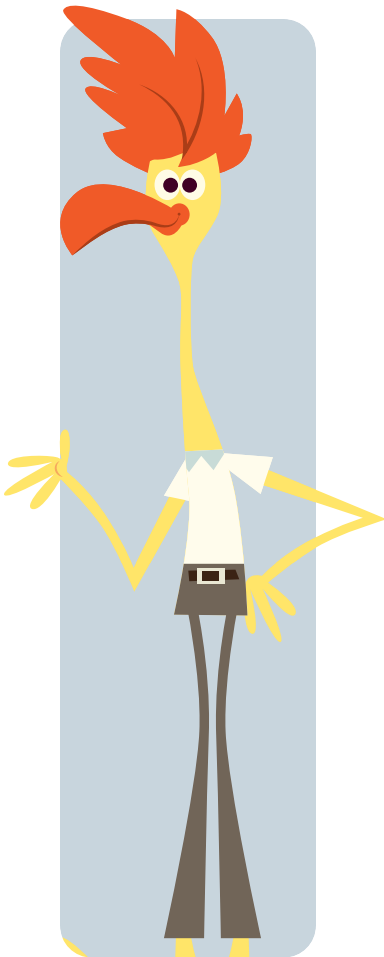
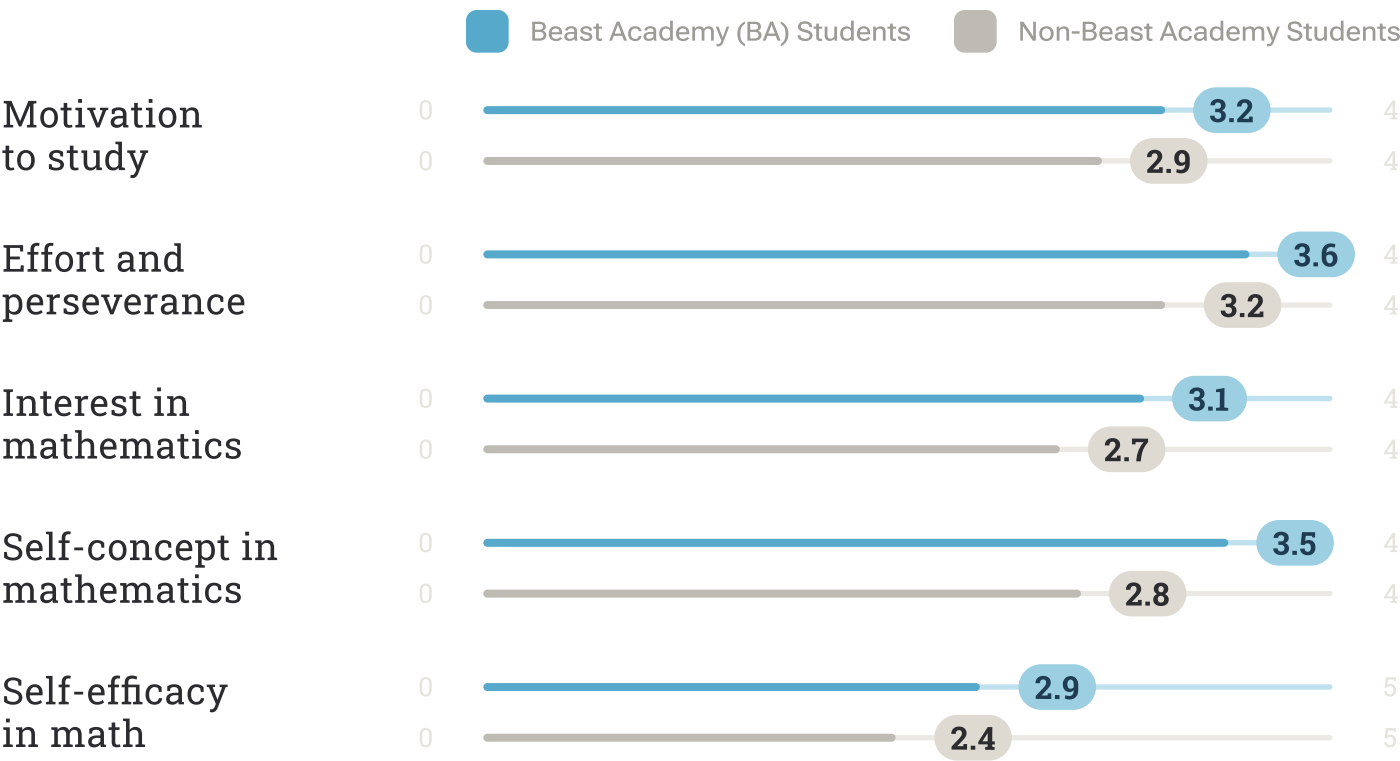
What Does This Mean?

The 9-point difference in math scores between low and high-usage students is roughly equivalent to 1-2 additional grade levels.

Finding 3

BA Usage Has A Positive Impact on Student Attitudes Toward Math

Beast Academy students reported more positive responses related to math on five of the eight attitudinal domains: motivation to study, effort and perseverance, interest in mathematics, self-concept in mathematics, and self-efficacy in math.



Conclusion

- In Mankato Public Schools, BA **reversed a 20+ year trend** in which the number of students scoring in the top percentiles had been steadily declining year over year.
- Not only did BA retain students scoring in the top percentiles, but actually **increased the number of students scoring in the top percentiles**.



Find out more about this comprehensive, comic-style elementary math curriculum and online program at beastacademy.com/educators